

PEGASUS SERIES



Premium Range

Food Service / Lowlines

Chillers designed with a superior heat resistant countertop so hot cooking equipment can be safely placed on top.

Options
R/H Services
Plinth mounting (pictured)



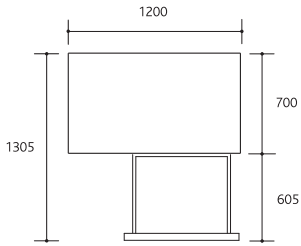
Warranty
2 year protection

PSF0007

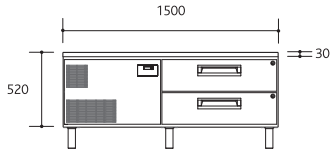
Specifications

Pegasus Series

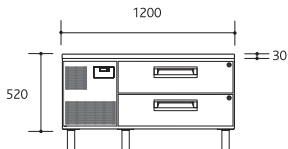
Food Service / Lowlines



Remote top view



Integral front elevation



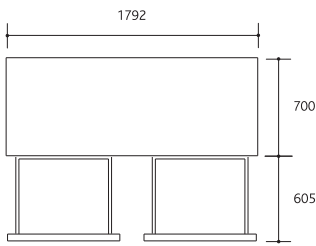
Remote front elevation

PGLL150 / PGLL150r - 1/1 & 2/1 GASTRONORM TRAYS

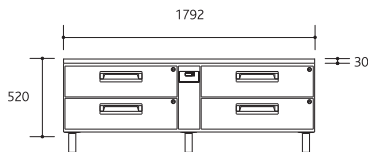
Model	Weight (kg)	Integral/Remote	Chiller/Freezer		
PGLL150	95	Integral	Chiller	Gross Volume 150 litres (5.3ft ³) Floor Area 1.05m ² (integral) 0.84 m ² (remote)	
PGLL150r	85	Remote	Chiller		
		Integral External (mm)	Remote External (mm)	Internal (mm)	
Height*		520	520	370	
Width		1500	1200	700	
Depth		700	700	555	

- Two refrigerated S/S drawers with individual key locks (W 638mm x D 508mm x H 109mm)
- Each drawer fits 2 x 1/1 pans 100mm deep
- Remote refrigeration duty 300 Watts at -5° SST
- +1°C to +4°C in 40°C ambient

PGLL150 / PGLL150r
2 DRAWER



Remote top view



Remote front elevation

PGLL300r - 1/1 & 2/1 GASTRONORM TRAYS

Model	Weight (kg)	Integral/Remote	Chiller/Freezer	
PGLL300r	115	Remote	Chiller	Gross Volume 300 litres (10.6ft ³) Floor Area 1.26m ² (remote)
		Remote External (mm)	Internal (mm)	
Height*		520	370	
Width		1792	2 x 700	
Depth		700	555	

- Four refrigerated S/S drawers with individual key locks (W 638mm x D 508mm x H 109mm)
- Each drawer fits 2 x 1/1 pans 100mm deep
- Remote refrigeration duty 372 Watts at -5° SST
- +1°C to +4°C in 40°C ambient

PGLL300r
4 DRAWER

*Height includes countertop, and excludes legs (150-180mm) NB: Adjustable castors option available on integral model only