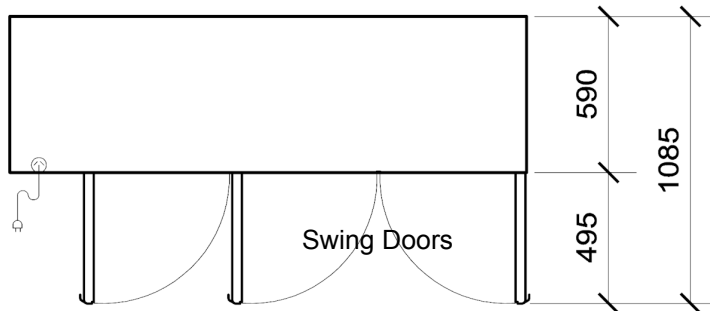


specifications

BB580r-3SW

SKOPE Backbar
3 Swing Door Remote Chiller (RB2013V)

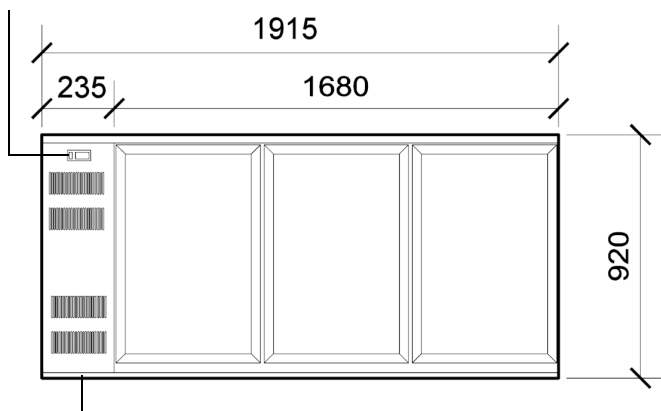


CABINET DIMENSIONS

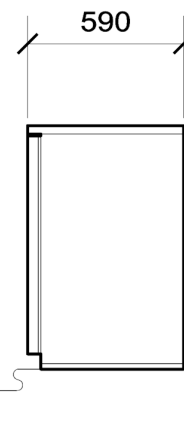
	External	Internal
Height:	920mm*	758mm
Width:	1915mm	1580mm
Depth:	590mm	530mm
Floor area:	1.13m ²	

* Height excludes castors, legs or optional worktop.

Electronic Controller



Side Mounted Remote Refrigeration Unit



Power Cord with 3-Pin Plug

Copyright © 2008 SKOPE Industries Limited

CABINET SPECIFICATIONS

Refrigeration system:	Electronic controlled, side mounted, remote refrigeration unit
Refrigerant:	Thermostatic expansion valve fitted as standard to suit R134a or R404A
Pipe connection size:	Liquid line: 1/4". Suction line: 3/8"
Remote refrigeration duty:	580 Watts
Cabinet internal volume:	580 litres
Insulation:	50mm thick, high density cyclo-isopentane polyurethane foam
Cabinet temperature range:	+1°C to +4°C up to 40°C ambient
Drainage:	Evaporator drain fitted inside service compartment (requires plumbing)
Electrical:	230-240 Volts a.c. 50 Hz, 0.9 Amps
Internal lighting:	1 x 24W T8 Frosted LED Tube (Ø26 x 1500mm, 5500K) - Switched
Internal door opening size:	3 door openings: 720mm high x 470mm wide
Doors:	Self-closing, double glazed toughened single Low-E safety glass or solid swing doors - LH and RH hinged
Worktop (optional):	Optional 25mm stainless steel worktop
Shelves:	Two adjustable shelves per door: 495/555mm wide x 440mm deep
Weight:	158 kg

SKOPE Industries Limited reserve the right to alter specifications without notice.

PSS0164 Rev. 2.1 Apr. 2016



SKOPE INDUSTRIES LIMITED



New Zealand Freephone: 0800 947 5673, Fax: (03) 983 3896. Australian Freephone: 1800 121 535, Freefax: 1800 121 533

Email: enquiry@skope.co.nz Website: www.skope.com