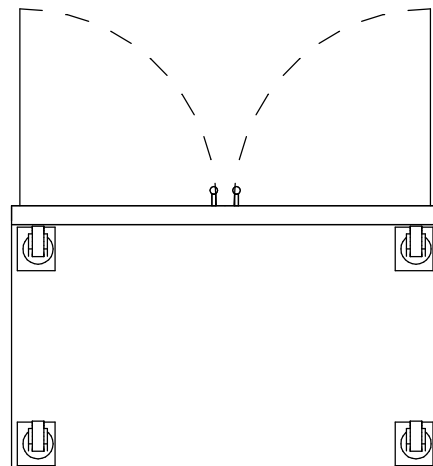
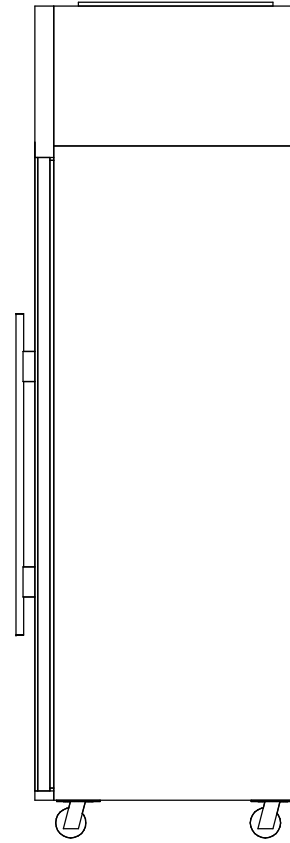
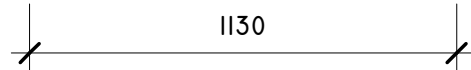
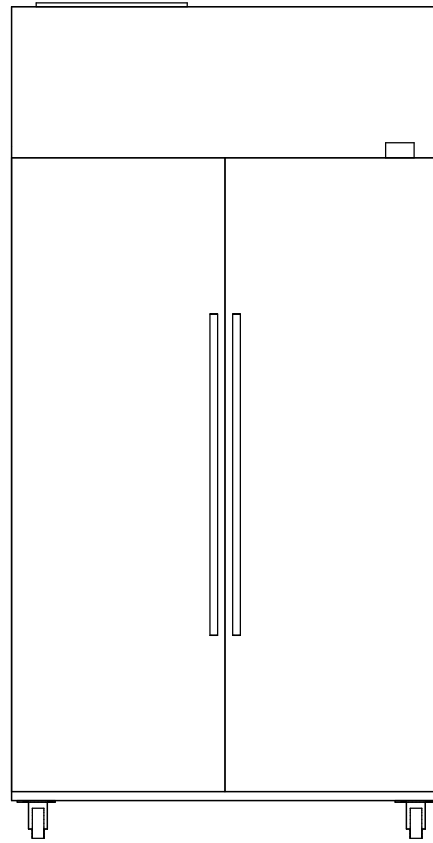
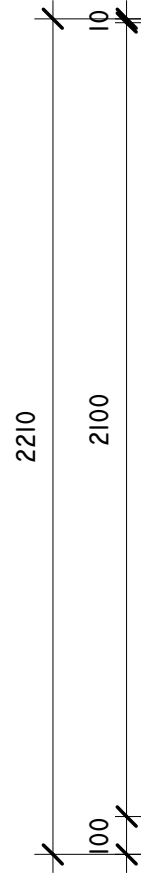
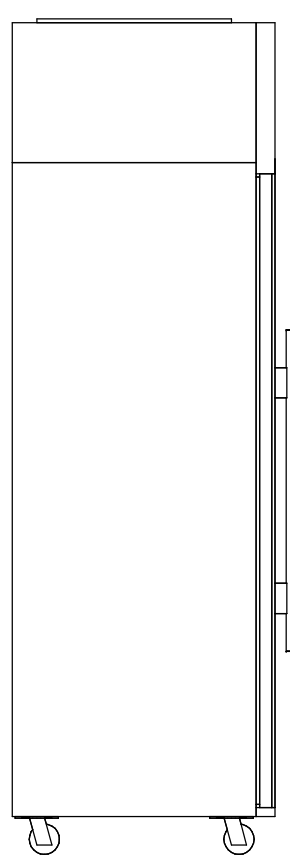
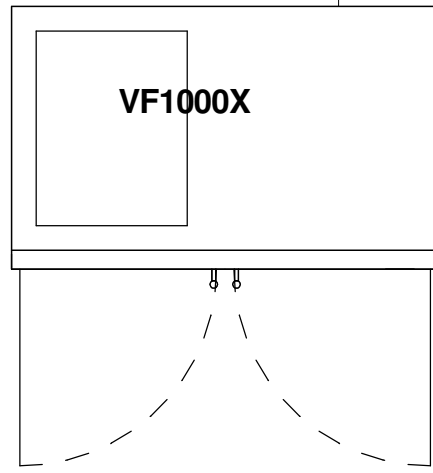
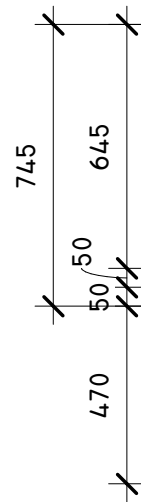
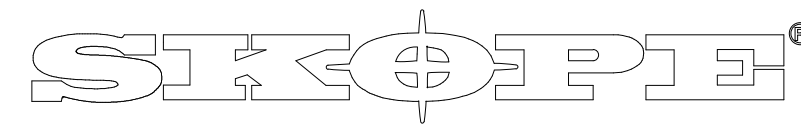


Electrical and Refrigeration Services Location



Cabinet Specifications:

Width (mm):	1130
Depth (mm):	745
Height (mm):	2210
Weight (kg):	280
Electrical Power (kW):	0
Electrical Voltage (V):	24
Electrical Ampere (A):	9
Electrical Frequency (Hz):	50
MEPS TEC (kW):	25.791
Refrigerant:	R134a
Heat Load (kW):	0
Refrigeration in Power:	N/A



Industries Limited

66 Princess St. PO Box 1091
Christchurch, New Zealand
New Zealand Freephone: 0900 947 5673
Australian Freephone: 1800 121 535
Email: enquiry@skope.co.nz
Website: www.skope.co.nz

Model: VF1000X	
Description: Vertical, 2 door High Performance Vertical Freezer with Integral, top refrigeration services	
Unless Otherwise Specified:	Scale
Folded Dimensions: Overall	1:20
Linear Tolerances: +/- 0.5mm	
Angular Tolerances: +/- 0.5mm	
Units: Millimetres	Revision
Copyright © SKOPE Industries Limited	..-